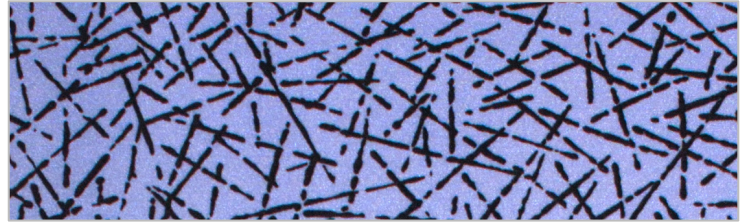


ZenaSwimwear.com

Fabrics Booklet



Tropical Getaway-----PR 102



Pick up Stix-----PR 107



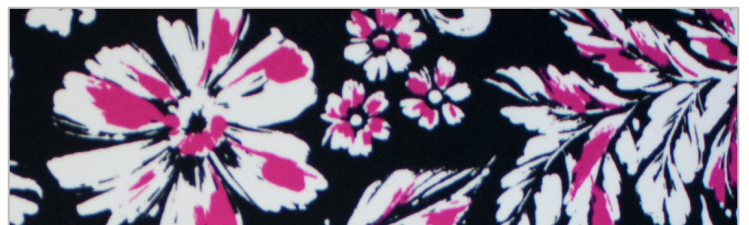
SOLD OUT-----PR 116



Cocktail Hour-----PR 141



Scarlett Bloom-----PR 164



Swanky-----PR 290

Prints-----	1-7
Solids-----	8-9
Specialty-----	10



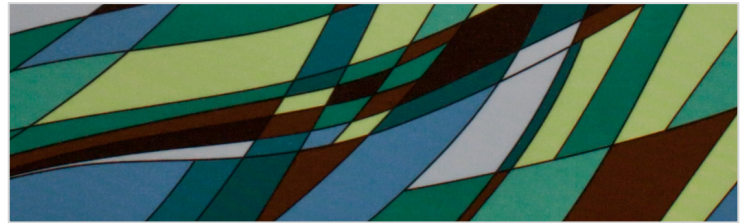
Cheer-----PR 191



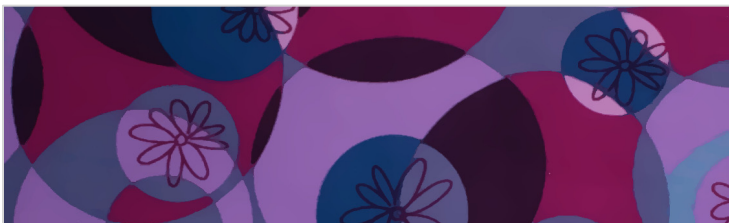
Tango-----PR 204



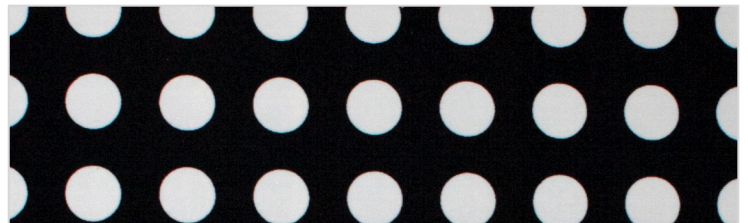
Limbo-----PR 192



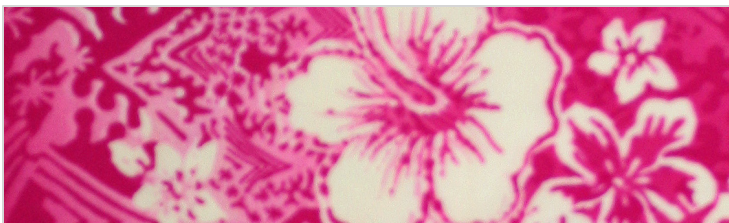
Razzle Dazzle-----PR 206



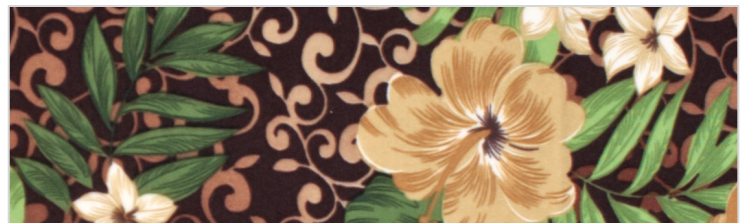
Bamboozle-----PR 195



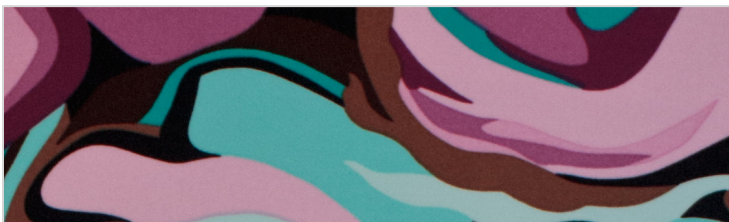
Salt on Pepper-----PR 210



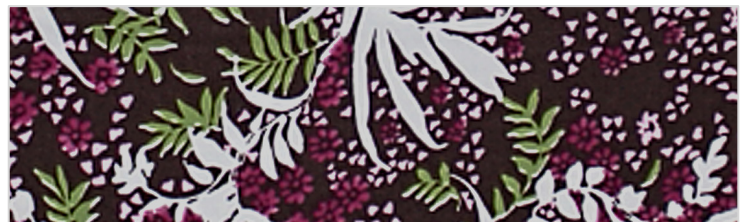
Pink Sweetie-----PR 196



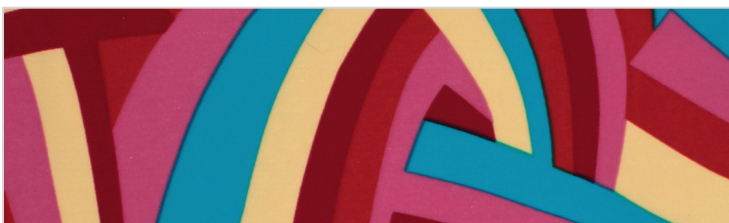
Mocha Swirl-----PR 211



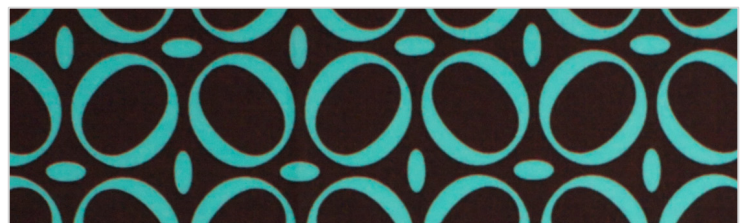
Dream-----PR 199



Raspberry Truffle-----PR 212



Giggles-----PR 203



OhSo Teal-----PR 213



Oh So Java-----PR 214



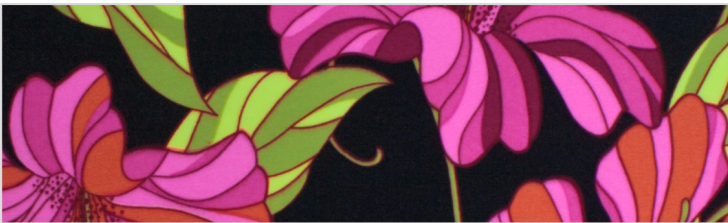
Butterflies-----PR 230



Amazon Woman-----PR 216



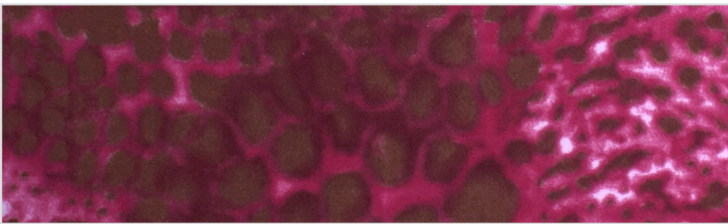
Country Charm-----PR 232



Country Club-----PR 217



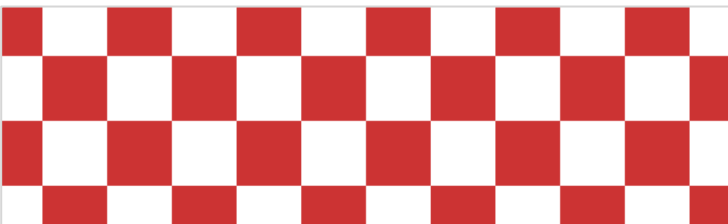
Posh-----PR 291



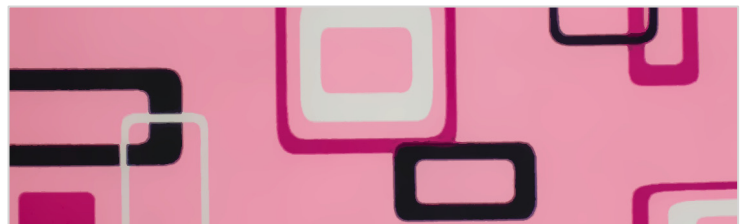
Lipstick Jungle-----PR 218



Pink Party-----PR 233



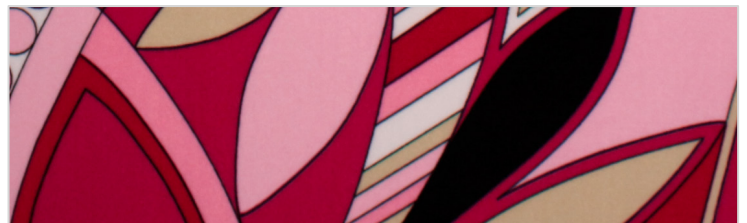
Croatia-----PR 219



Hallmark Cotton Candy-----PR 234



Voltage-----PR 229



Paris Chic-----PR 235



Crush-----PR 236



Zebra-----PR 243



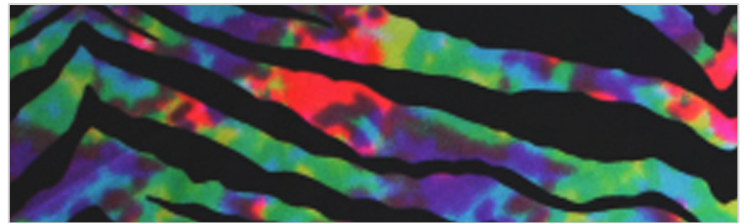
Anime-----PR 237



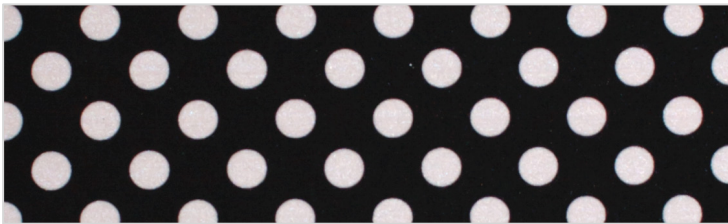
Electric Zebra-----PR 244



Diva-----PR 238



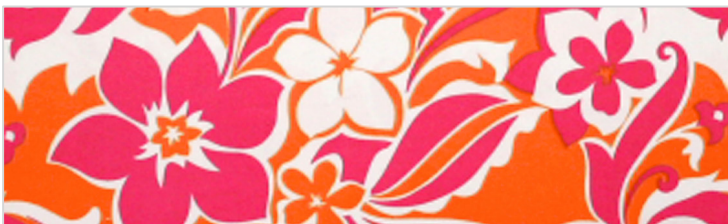
SOLD OUT-----PR 245



Spotted-----PR 239



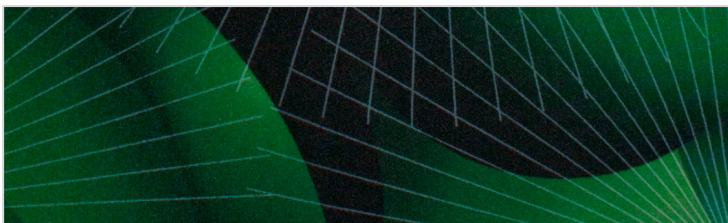
Inferno-----PR 247



Sunkist-----PR 231



Radiance-----PR 249



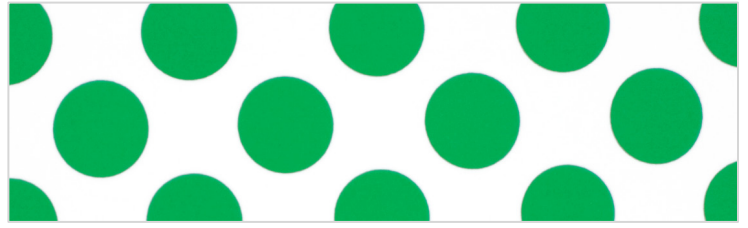
Bombastic Green-----PR 242



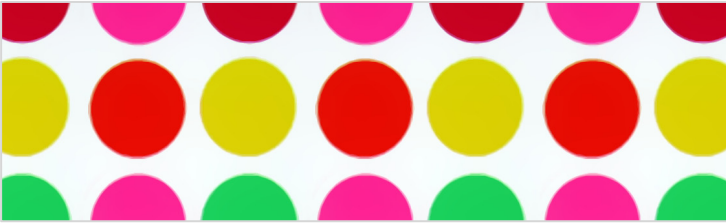
Sunrise-----PR 250



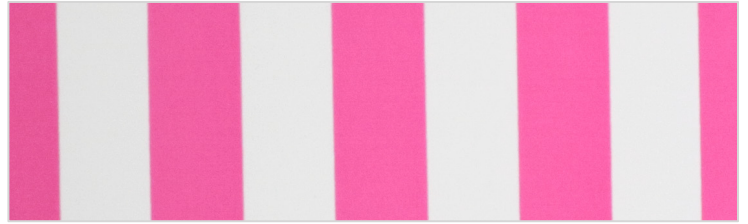
Hula-----PR 251



Kelly Dot-----PR 259



Twister-----PR 252



Bubblegum Stripe-----PR 260



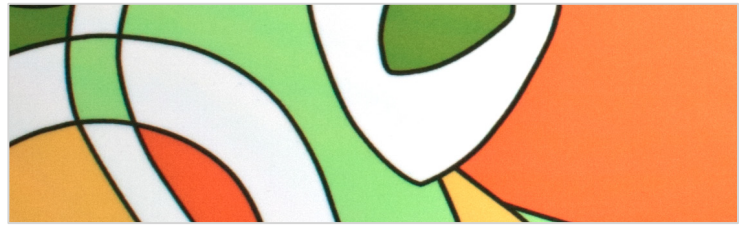
Bumblebee-----PR 253



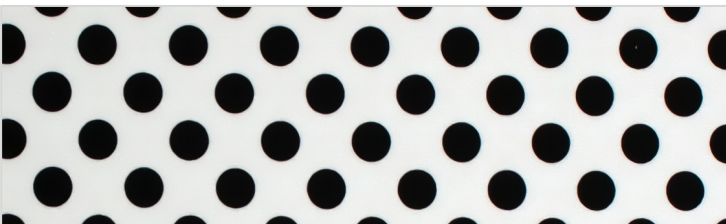
Azure-----PR 261



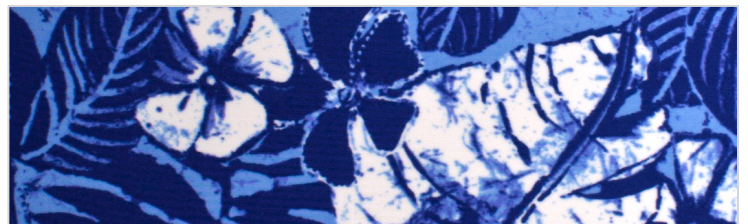
Electric Slide-----PR 254



Citrus-----PR 262



Dalmatian Dot-----PR 255



Bali Blue-----PR 263



Sundae-----PR 256



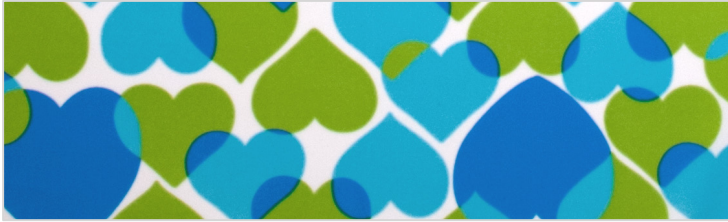
Cherry Dot-----PR 265



Heart-----PR 266



SOLD OUT-----PR 272



Soul-----PR 267



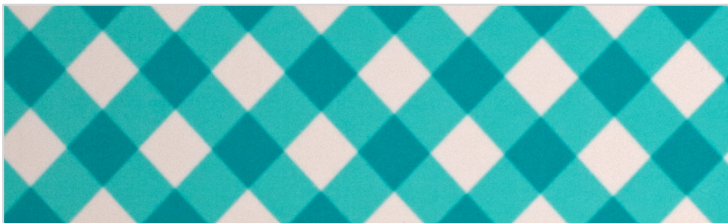
Camo Floral-----PR 273



Lucky-----PR 268



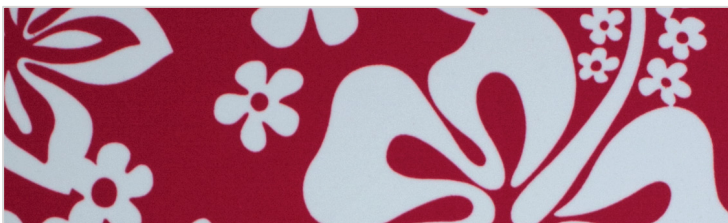
Safari-----PR 274



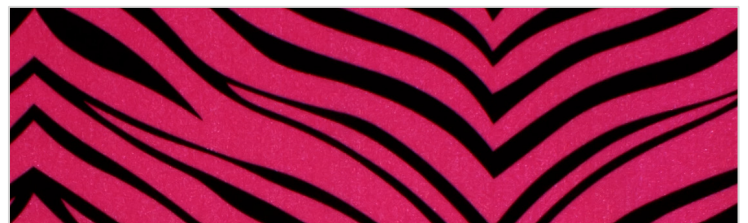
Gingham-----PR 269



SOLD OUT-----PR 275



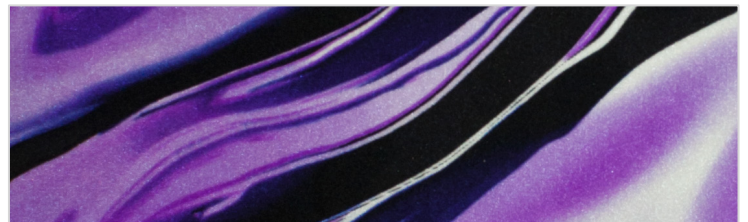
Oahu-----PR 270



Zebra Princess-----PR 276



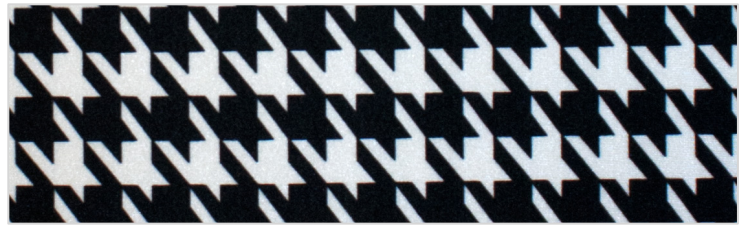
Serenity-----PR 271



Modena-----PR 277



Puzzle-----PR 278



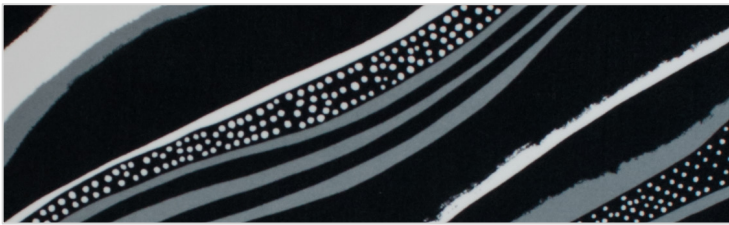
Hounds tooth-----PR 284



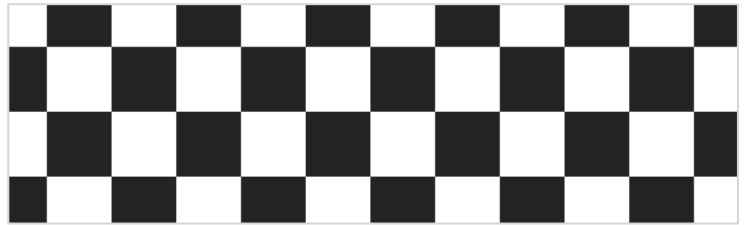
Breeze-----PR 279



Camo Princess-----PR 285



Prima-----PR 280



Forced Racing-----PR 286



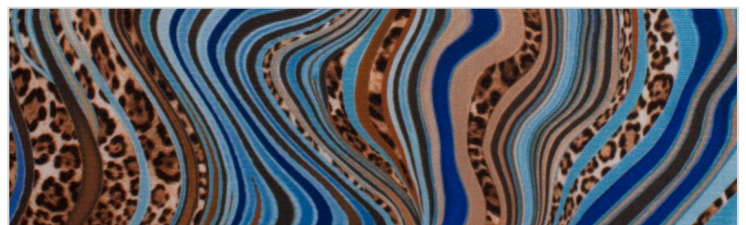
Sway-----PR 281



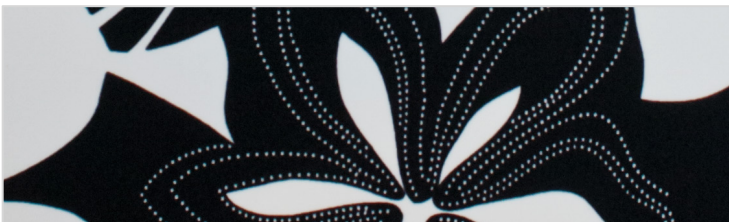
Sweetheart-----PR 287



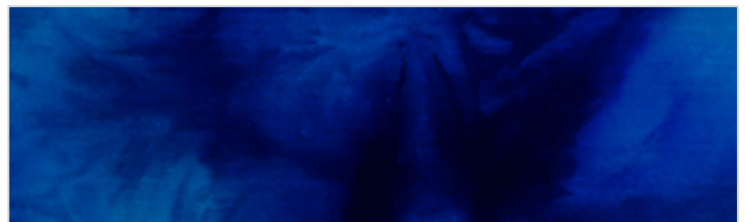
Sapphire Gem-----PR 282



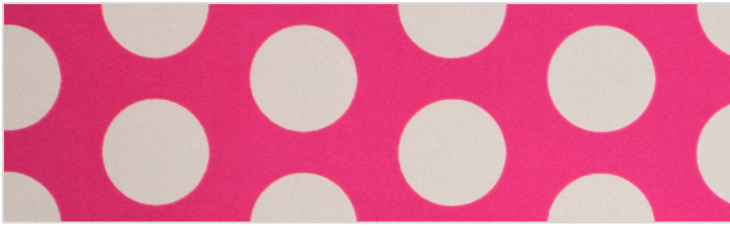
SOLD OUT-----PR 288



Glamour-----PR 283



Astral Tie-dye-----PR 289



Cupcake Polka dot-----PR 293

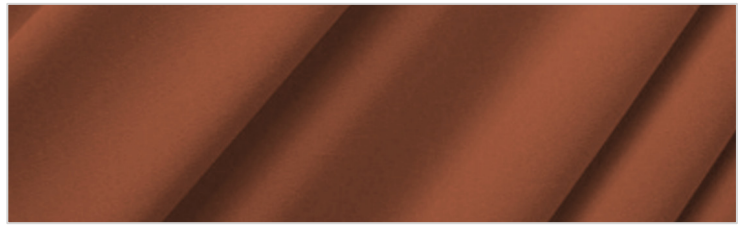
Neon Prints & Solids

Neon and Bright colored fabrics (orange, yellow, lime greens and hot pinks); fade more quickly than any other fabric. These fabrics are the most sensitive to sunlight of all the fabrics.

Solid



Deep Orange-----SD 045



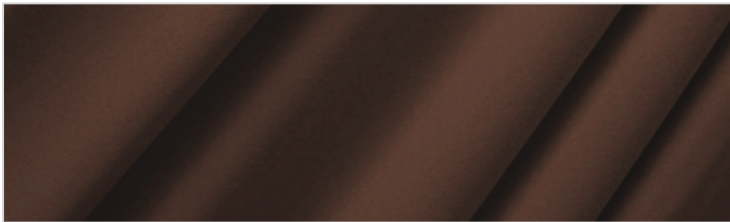
Copper-----SD 044



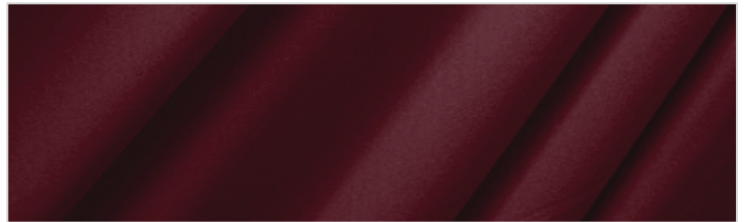
Deep Pink-----SD 004



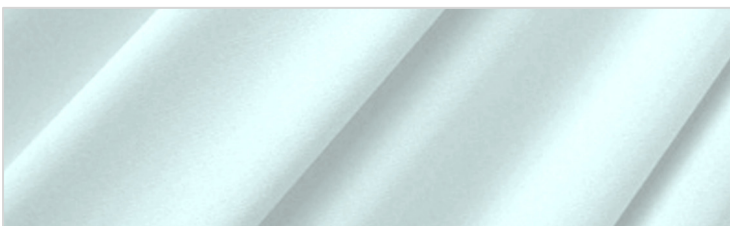
Red-----SD 042



Milk Chocolate-----SD 001



Wine-----SD 010



White-----SD 022



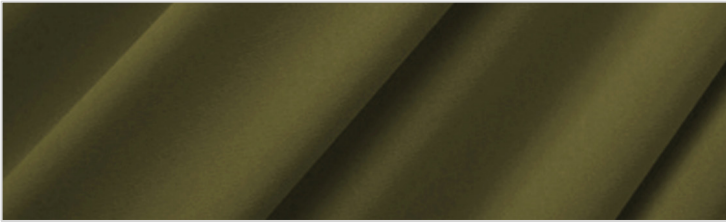
Samba Yellow-----SD 003



Kelly Green-----SD 007



Moss-----SD 043



Olive-----**BACKORDER**-----SD 002



Aqua-----SD 017



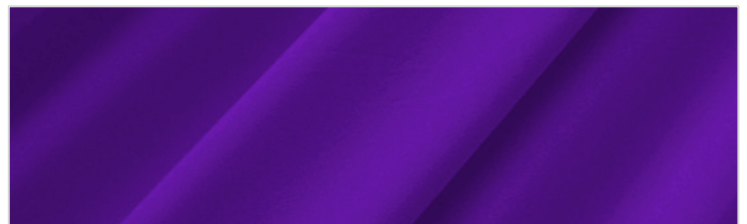
Turquoise-----SD 016



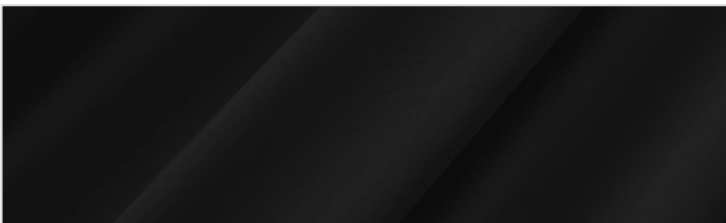
Royal Blue-----SD 020



Navy-----**ON BACK ORDER**-----SD 020



Purple-----SD 014



Black-----SD 027

(4) way & (2) way Stretch 

99% of the fabrics ZenaSwimwear does use are 4-way stretch, they stretch up-down, side to side, and at all angles. We find that 4 way fabrics fit the best. 2-Way fabrics stretch across the body, but have limited stretch up-and-down.

White and Other light colored Fabrics

No matter what you line a white suit with; it will slightly be see through. Yellows, light blues, light pinks and lavenders are also a problem. Use your judgment when ordering a suit in one of these colors. If we are offering a light colored fabric on our internet site it will be lined appropriately. However, if you have very dark skin it still might be a problem. As well, these fabric colors are a mistaken choice for someone who swims in the ocean, lakes or streams. These suits will stain easily in muddy type water.

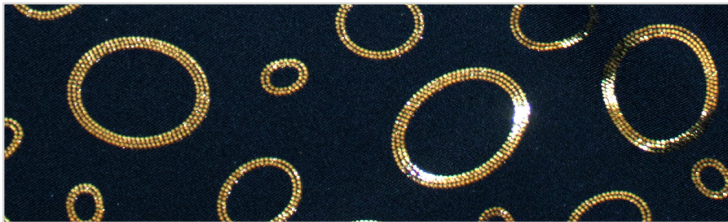
Specialty



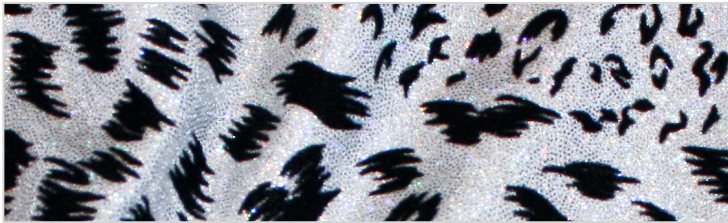
Silver Microdot-----SP 001



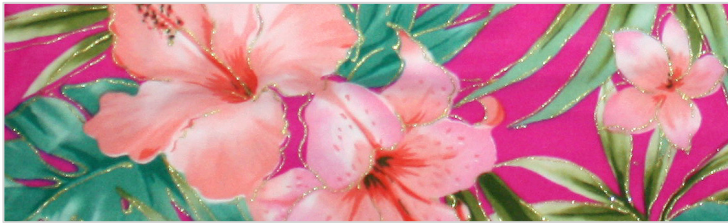
Copper Lame-----SP 003



Black & Gold Foil Rings-----SP005



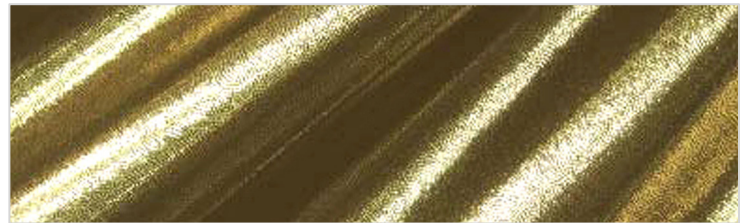
Winter Cat / Microdot with Black Flock-----SP 007



Tickled Pink / Gold Foil overlay-----SP 009

Metallics

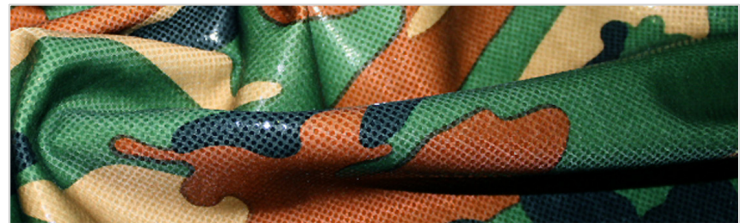
Metallic fabrics are Nylon Lycra with a metallic overlay. These overlays have gotten stronger over the years but are still subject to flaking and dulling. Special care should be given to these suits which are made more for their look and less for their durability.



Gold Microdot-----SP 002



ON BACK ORDER-----SP 004



Camouflage with Clear overlay-----SP 006



Bandana with Silver Foil overlay-----SP 008

Chlorine Resistant

From our years of experience we have found that there really is not such a thing as chlorine resistant fabric. Some fabrics last longer, but no Fabric can hold up to the rigors of chlorine and salt water. Chlorine is like soaking a piece of fabric in bleach. The result of Chlorine on swimwear is about the same. Swimwear fades. Our solid tricot Lycra fabrics are chlorine resistant and will retain their color much longer than any of our printed fabrics.